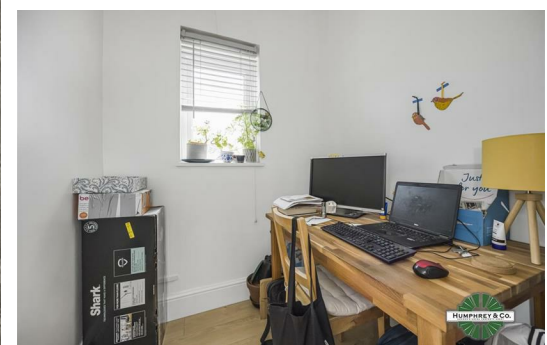




Leopold Road

Approximate Gross Internal Area
Total = 49.0 sq m / 528 sq ft

This plan is for layout guidance only. Not drawn to scale unless stated. Windows and door openings are approximate. Whilst every care is taken in the preparation of this plan, please check all dimensions, shapes and compass bearings before making any decisions reliant upon them.



Directions

Contact

125 Hoe Street
London
E17 4RX

E: sales@hcolondon.com

T: 02085 210 755

hcolondon.com



2 Bed
Flat
located in



First Floor, Leopold Road

London
E17 9DA

£380,000
Share of Freehold



FIRST FLOOR TWO BEDROOM FLAT – SHARE OF FREEHOLD – SHARED DRIVEWAY WITH PARKING – MODERN – RECENTLY REFURBISHED – FULLY TILED BATHROOM – BRIGHT & AIRY – MUST BE SEEN – DOUBLE GLAZING – GAS CENTRAL HEATING

Guide Price £375,000 – £410,000

A stylish, move-in ready home in a prime Walthamstow location, offering share of freehold and private parking – a rare find at this price point.

A well-presented two-bedroom first floor flat situated on the sought-after Leopold Road, E17.

This bright and airy property offers a spacious lounge filled with natural daylight, creating a welcoming living space ideal for both relaxation and entertaining. The flat comprises two bedrooms, including a generously sized double bedroom featuring smooth plastered walls and ceiling, complemented by stylish laminate flooring, along with a second single bedroom perfect for a guest room, home office, or nursery.

